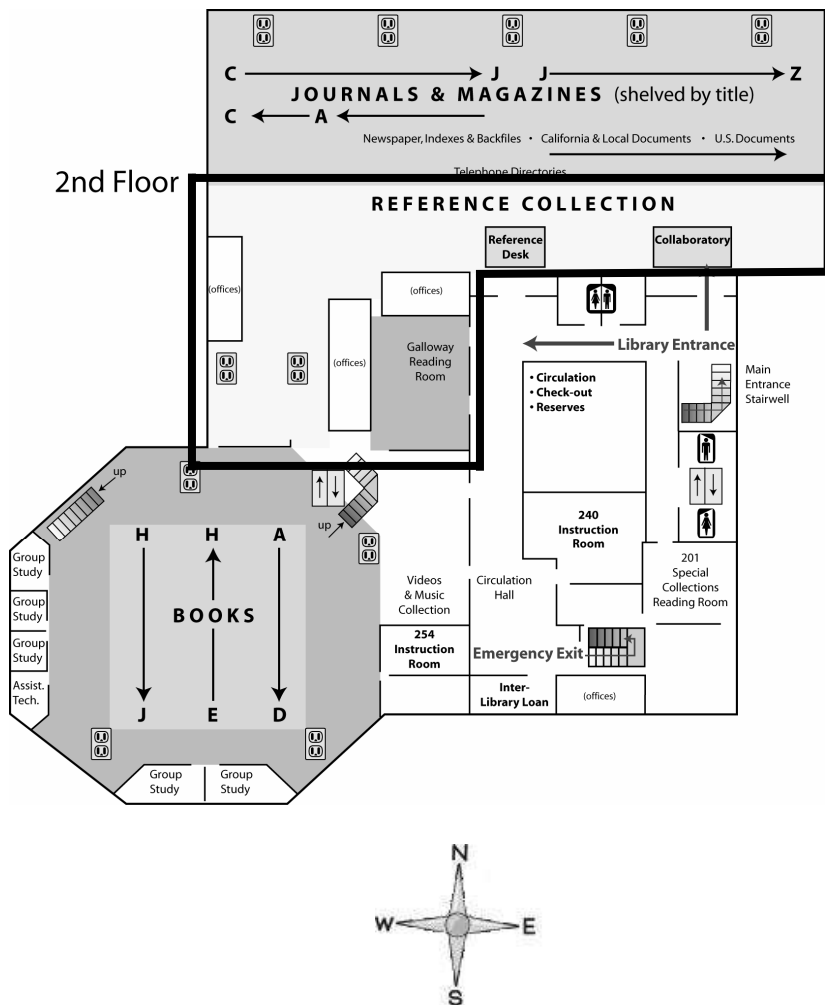


## Wireless Coverage in the Library

Wireless service is available in the Reference Desk area, Reading Room, and Group Study Area. You may be able to get access in other areas of the Library, but signal strength/ bandwidth will vary depending upon your location.



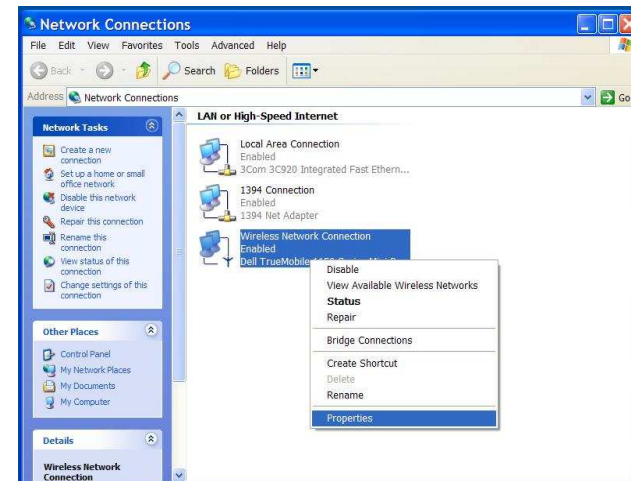
## Wireless configuration instructions for Windows XP

- If you have not connected to the Library's wireless system previously, begin with Step 1
- If you have connected to the Library's wireless system in the past, begin with Step 8

### Setup instructions

*Check step 8 before proceeding*

- 1 Click **START** → **Settings** → **Control Panel** or **START** → **Control Panel**
- 2 Open the *Network Connections* applet and right-click on your computer's wireless connection.



- 3 Click *Properties* from the right-click menu.

If your system automatically detects the wireless network, you should be able to proceed to step 9.

- 4 Select the *Wireless Networks* tab.



- 5 Check "Use Windows to configure my wireless network settings," then click the **Add** button.

- 6 Type, in all capital letters, **CSUSWLAN** in the Network name (SSID) box. Make sure **Network Authentication** is set to **Open** and **Data encryption** set to **Disabled**.

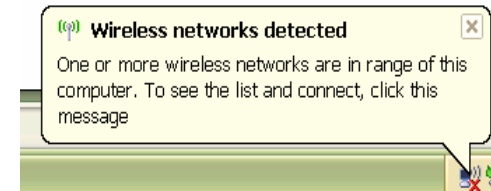


7

Click **OK**→**OK**→**CLOSE** to close the three open windows. A wireless connection icon will appear in the Taskbar at the bottom right of the screen. Mouseover the icon to ensure the connection is active.

8

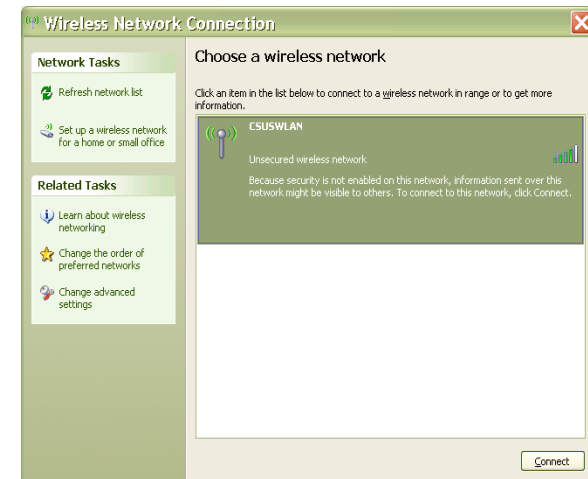
If your system automatically detects the wireless network, you should see the balloon window below.



Click inside the balloon window to open the connection properties.

9

Select the wireless connection **CSUSWLAN**.



10

Click the **Connect** button. Another balloon window should appear verifying the connection. Click the **Connect Anyway** button.

